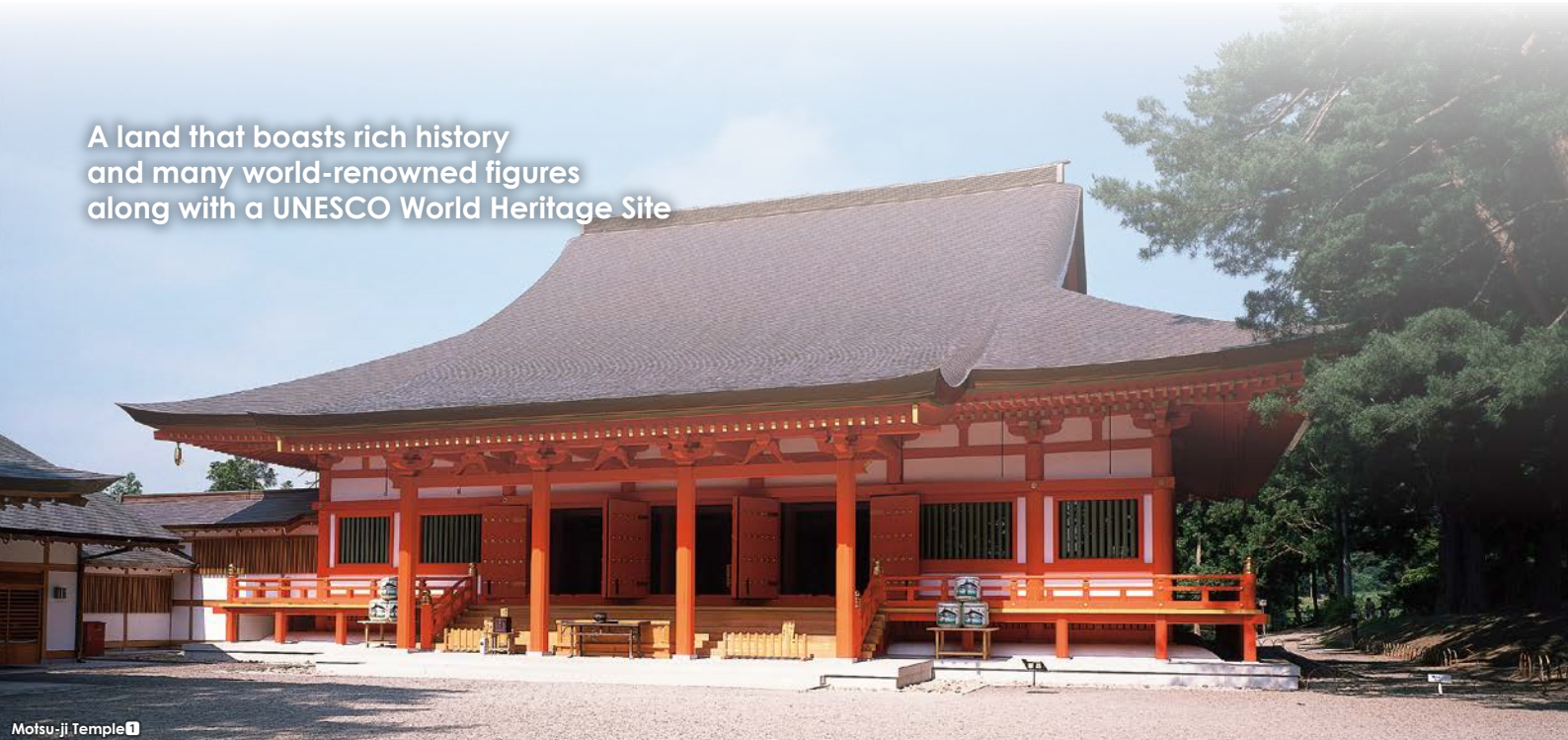


The Kitakami mountain range: An area centered around Ichinoseki City, Hiraizumi Town, and Oshu City in Iwate Prefecture, and Kesennuma City in Miyagi Prefecture - This is the candidate site for the ILC (International Linear Collider)



Welcome to the ILC Kitakami site!

A land that boasts rich history and many world-renowned figures along with a UNESCO World Heritage Site



Motsu-ji Temple 1



A treasure trove of food products surrounded by gorgeous mountain ranges and ocean habitats

Esashi Apples 2

Anatoshi-iso Rocks of the Goishi Coast 3

Warm hospitality throughout all four seasons - A comfortable lifestyle surrounded by good people



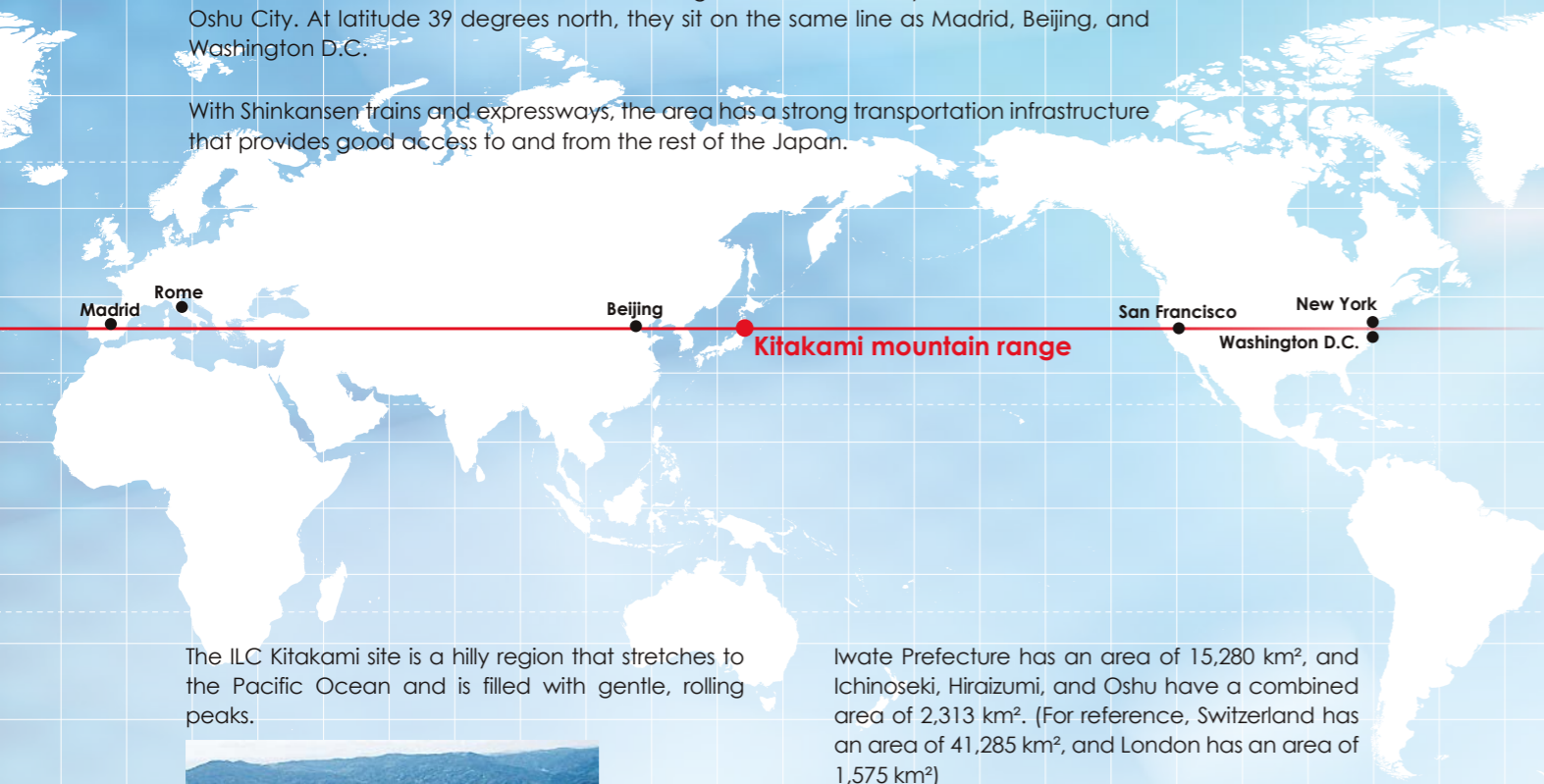
Sendai Pageant of Starlight 4

Hitaka Hibuse Festival 5

About the ILC Kitakami site

To the southwest of the Kitakami mountain range lies Ichinoseki City, Hiraizumi Town, and Oshu City. At latitude 39 degrees north, they sit on the same line as Madrid, Beijing, and Washington D.C.

With Shinkansen trains and expressways, the area has a strong transportation infrastructure that provides good access to and from the rest of the Japan.



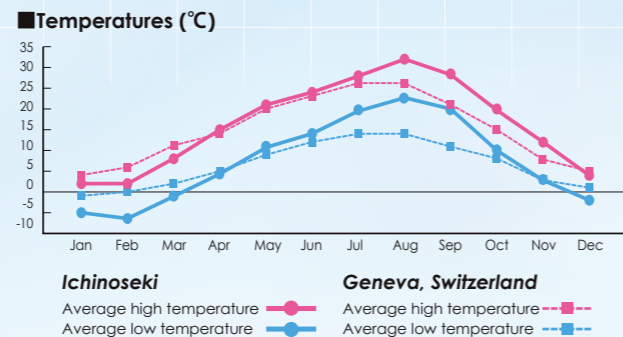
The ILC Kitakami site is a hilly region that stretches to the Pacific Ocean and is filled with gentle, rolling peaks.



Central region of the Kitakami site

Iwate Prefecture has an area of 15,280 km², and Ichinoseki, Hiraizumi, and Oshu have a combined area of 2,313 km². (For reference, Switzerland has an area of 41,285 km², and London has an area of 1,575 km²)

The area is blessed with beautiful scenery and four distinct seasons.



In spring, the cherry blossom trees bloom a pale pink, and in summer you can enjoy swimming in the ocean off the coast of Sanriku. Autumn brings culinary delights from both the sea and land, and winter is packed with various winter sports. Iwate is a natural wonderland abundant in water and greenery.



Tenshochi in spring



Canoeing in summer



Yakeishidake in autumn



Skilling at Hachimantai Resort in winter

An environment for research

In 2013, the researcher-led ILC site evaluation committee designated the Kitakami mountain range as the Japanese domestic candidate site.

During a visit to the area, Dr. Lyn Evans, the Director of the Linear Collider Collaboration (the international organization that coordinates research and development work for the linear collider accelerator and detectors around the world) declared the Kitakami site to be perfectly suited for the ILC.

Electricity can easily be supplied to the site, and it will be possible to transport heavy equipment from the coastal ports after improving some portions of the roads.

There are currently around 2,000 rooms of accommodations in Ichinoseki and Oshu.

A strong slab of granite with no active faults provides the bedrock for the 50-kilometer site.

The Esashi Earth Tides Station is a national observatory located on a slope of the Kitakami mountains. The equipment inside the facility took absolutely no damage from the Great East Japan Earthquake of 2011 so we know that the Kitakami mountain range is extremely stable.



Paragliding



Hot air balloon festival in Ichinoseki and Hiraizumi



Climbing wall



Motocross



Horseback riding



Dance of the One Hundred Deer



Genbikiei Gorge



Pacific saury haul in Kesenuma
(Photo: Miyagi Prefecture Tourism Division)



Maesawa beef

Living in the area

(English Consultation Services for Life in the Area)

To ensure that foreign residents live comfortably in the area, there are services that give advice on a variety of issues, such as Japanese language learning, medical facilities, welfare, child-raising, and more.

(Safety)

Japan is a very safe country, and Iwate in particular has a very low crime rate.

(Medical Facilities)

- Around 200 hospitals and clinics
- Helicopter emergency medical service

(Education)

- The children of foreign residents can enter public school in Japan (with Japanese language instruction).
- In Sendai, classes taught in English are held at 2 international schools.

(Shops and Markets)

There are many shops and markets in the area, so residents can go about their daily lives in comfort.



Outlet Mall

(Housing)

- There are plenty of apartments and houses available for rent.
- Inexpensive property is available and is plentiful enough to meet the demand for building new residences for researchers.

(Financial Institutions)

There are around 30 foreign money exchange institutions that can send money internationally.

(International ILC Support Committee)

- An independent organization made up of foreign residents living in the Kitakami site.
- They are dedicated to developing a community that is welcoming to for both foreign and Japanese residents.

(The Reconstruction)

Tohoku was hit hard by the Great East Japan Earthquake and Tsunami on March 11, 2011. As the area proceeds towards reconstruction, the people eagerly await the realization of the ILC.

(Disaster Preparedness in Japan)

- Japan is very well-prepared against natural disasters, and people are able to live their lives comfortably.



Sendai cityscape

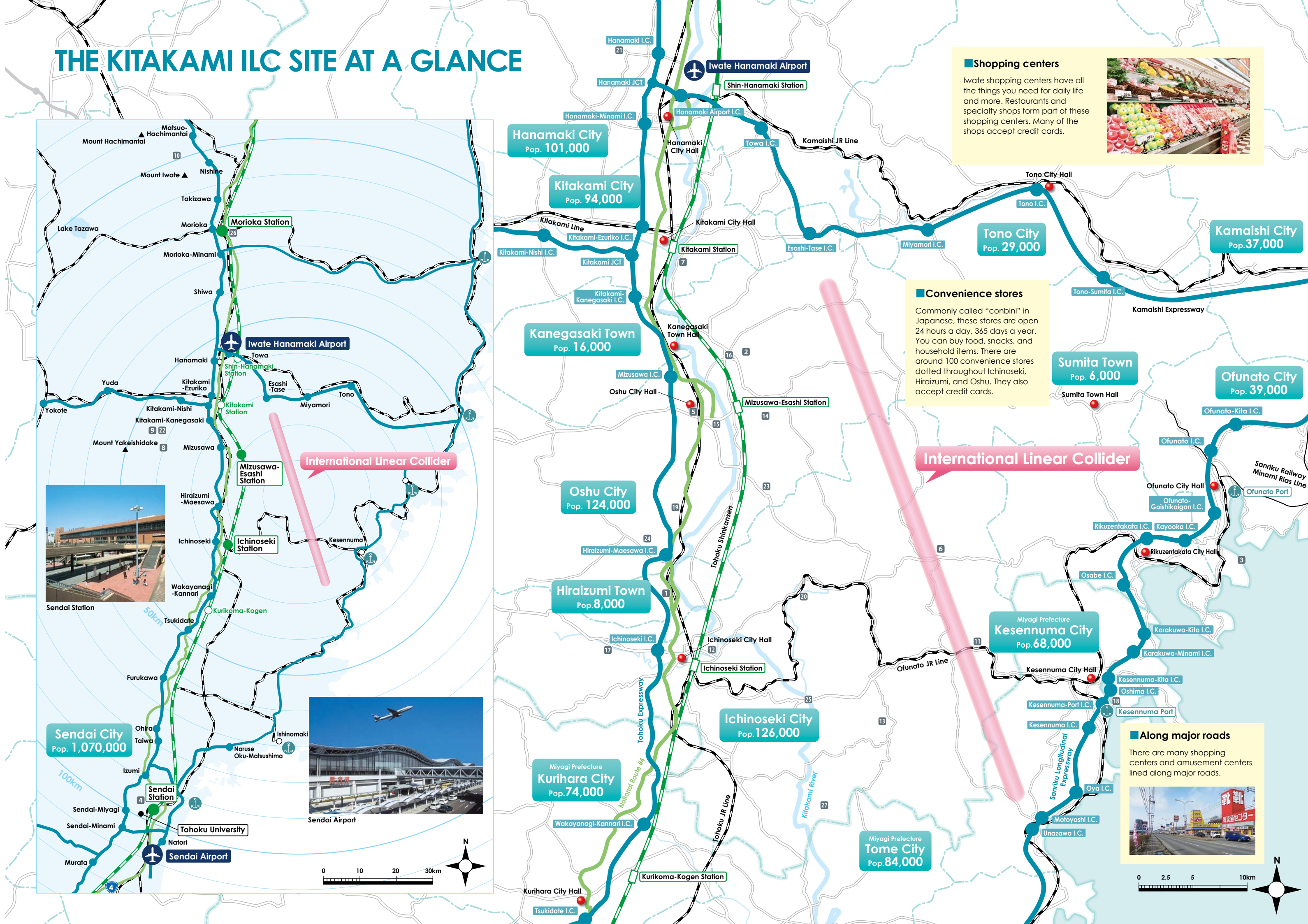


Vegalta Sendai Soccer Club ©VEGALTA SENDAI

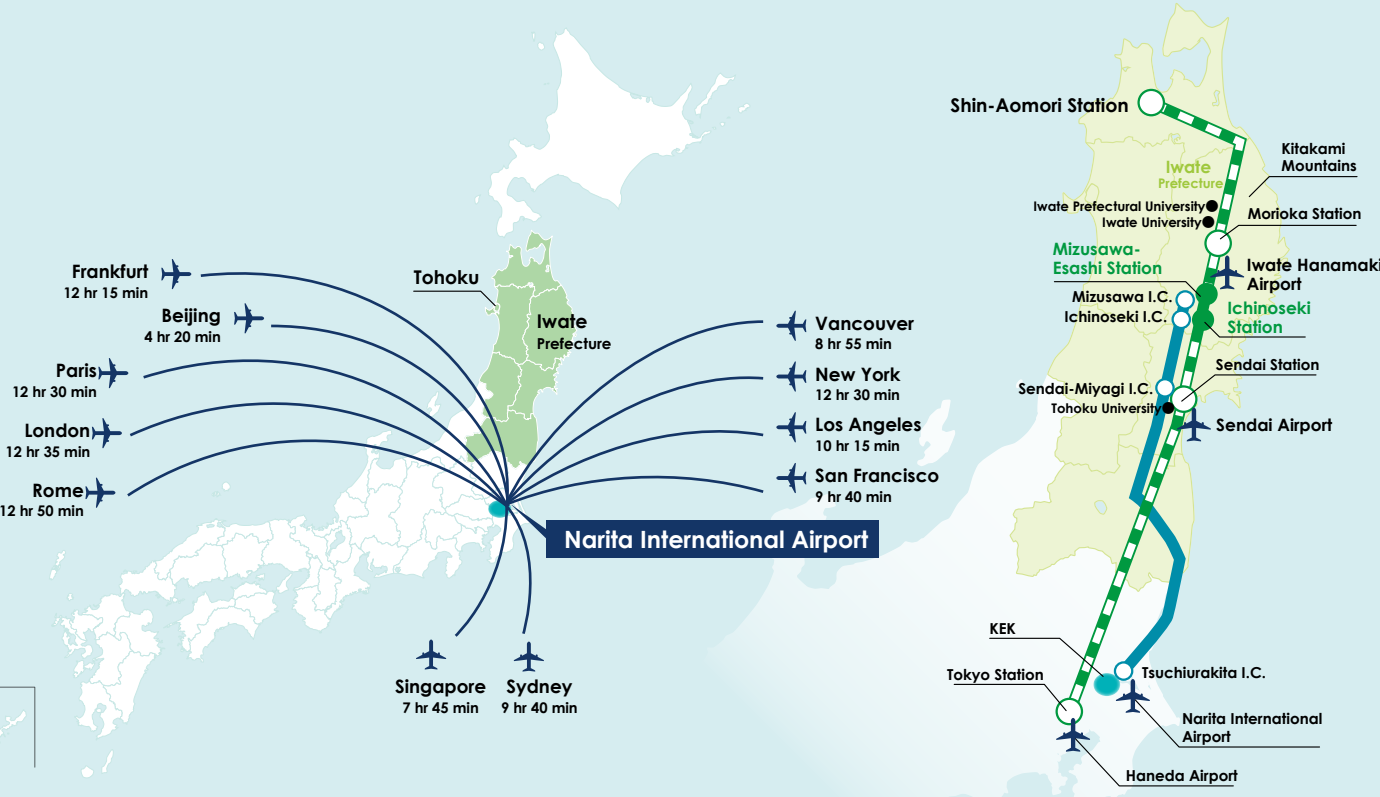
(City of Trees, Sendai)

- Sendai City is the largest city in Tohoku.
- Population: 1,070,000.
- It is nicknamed the City of Trees because there are many beautiful scenic spots close to the city center.
- Tohoku University is closely involved with the ILC project, and will be an international hub for the development of the particle detectors for the ILC.
- Sendai Airport carries 5 international routes and 9 domestic routes.

THE KITAKAMI ILC SITE AT A GLANCE



Getting to Tokyo from around the world



Getting to the site from Tokyo and Tsukuba



(From Tokyo)

- By Shinkansen:
2 hr 10 min to Ichinoseki Station
2 hr 20 min to Mizusawa-Esashi Station
- Very convenient, with trains running frequently
- Able to work together on a day-to-day basis with Tokyo University's School of Science and the International Center for Elementary Particle Physics

(From Tsukuba and KEK)

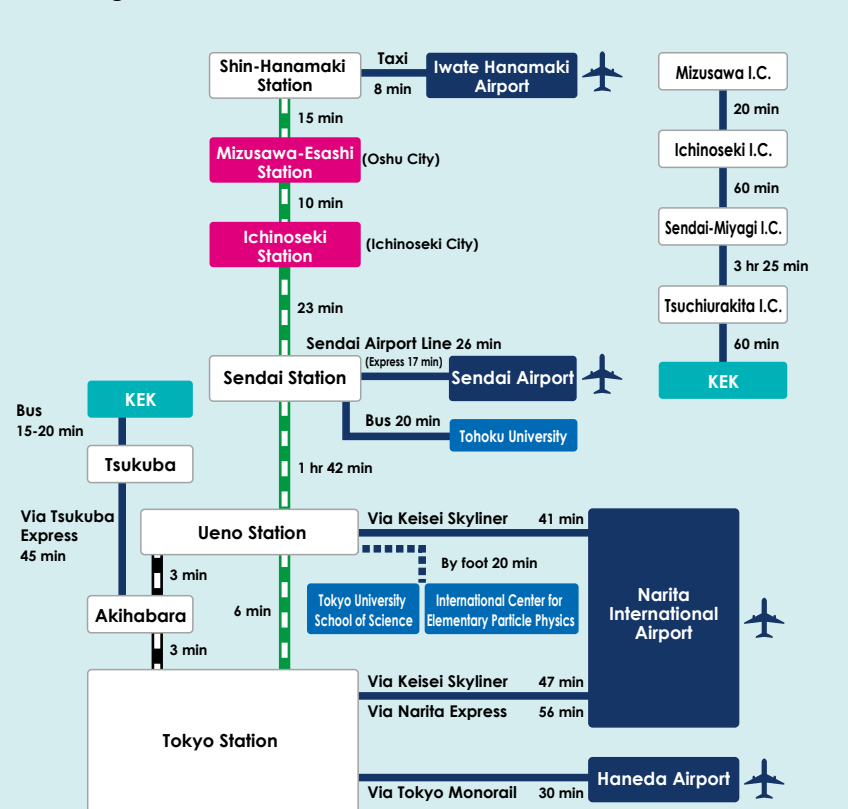
- By Shinkansen:
3 hr 30 min to Ichinoseki Station
3 hr 40 min to Mizusawa-Esashi Station
- By Car:
4 hr 40 min to Ichinoseki I.C.
5 hr to Mizusawa I.C.

(Researchers would be able to transport accelerator parts and measuring devices themselves by car)

(About the Shinkansen)

The trains in Japan run frequently and reliably. Riding the train is safe and the cars are always clean and well-cared for. In particular, the Shinkansen runs at a top speed of 320km/h.

■ Taking the Shinkansen (only fastest times are shown)



*I.C.: "interchange", expressway exit



● Related organizations

1. About the ILC

	Organization or site name		URL
World	LINEAR COLLIDER COLLABORATION		http://www.linearcollider.org/
		International Linear Collider	http://www.linearcollider.org/ILC
Organization	Advanced Accelerator Association Promoting Science & Technology (AAA)		http://aaa-sentan.org/en/about_us.html
	HIGH ENERGY ACCELERATOR RESEARCH ORGANIZATION, KEK	R&D toward the International Linear Collider	http://legacy.kek.jp/intra-e/ http://legacy.kek.jp/intra-e/research/ILC.html
Prefectural	Iwate Prefecture	TOHOKU: A Candidate Site for the International Linear Collider	http://www.pref.iwate.jp/view.rbz?cd=46134&ik=0&pnp=14
Municipal	Oshu City	Oshu International Linear Collider Web site	http://www.city.oshu.iwate.jp/htm/ilc/ (Japanese)
	Ichinoseki City	International Linear Collider	http://www.city.ichinoseki.iwate.jp/index.cfm/1,0,166.html (Japanese)
University	Tohoku University	TOHOKU UNIVERSITY	http://www.tohoku.ac.jp/english/
		The Tohoku University Council for the Promotion of the ILC	http://www.ilc.tohoku.ac.jp/cpilc/?lang=en
	Iwate University	Iwate University	http://www.iwate-u.ac.jp/english/index.shtml

2. Life in Japan

	Organization or site name		URL
National	Ministry of Justice		http://www.moj.go.jp/ENGLISH/index.html
		Immigration Bureau	http://www.immi-moj.go.jp/english/index.html
Prefectural	Iwate International Association		http://iwate-ia.or.jp/?l=en
	Miyagi International Association		http://mia-miyagi.jp/english/index.html
Municipal	Oshu International Relations Association		http://www.oshu-ira.com/english/index.html
	Oshu City	Oshu International Linear Collider Web site	http://www.city.oshu.iwate.jp/htm/ilc/ (Japanese)
	Ichinoseki City		http://www.city.ichinoseki.iwate.jp/ (Japanese)
	Sendai City		http://www.city.sendai.jp/language/english.html
	ILC Support	The International ILC Support Committee	https://www.facebook.com/InternationalILCSupportCommittee

● Contact

ILC Section, Office of Policy Promotion, Department of Policy and Regional Affairs, Iwate Prefectural Office
 (020-8570) 10-1 Uchimarui, Morioka City, Iwate Prefecture, Japan
 TEL: 019-629-5217 E-mail: AA0001@pref.iwate.jp



Pride of our Hometown - Huge Fireworks Festival



Kitakami River and Mount Iwate



Festival of 200,000 Tulips at Tategamori Ark Farm